

Material - 9mm "Tufnol" sheet (phenolic paper)

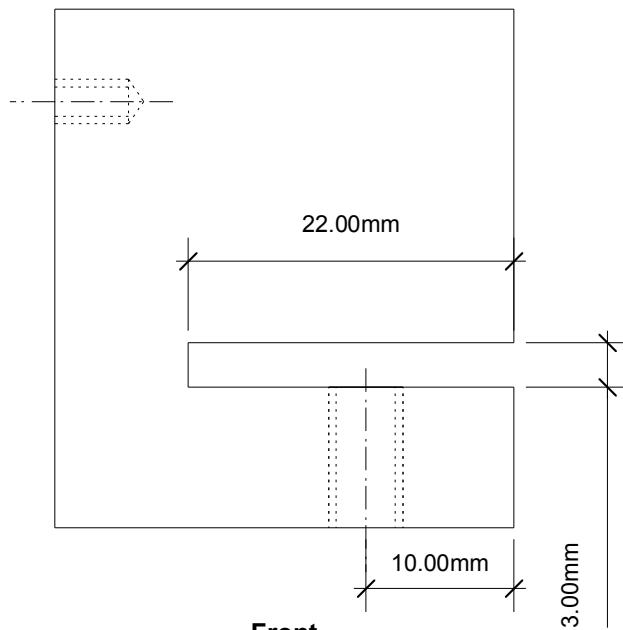
TITLE FoamCutter™	DATE <i>23 Mar 2007</i>
PART NUMBER <i>Horizontal Pulley Clamp (2 off)</i>	DRAWN BY <i>N Gillies</i>
CAD FILE NAME foamcutter.mcd	SHEET <i>1 of 8</i>

1

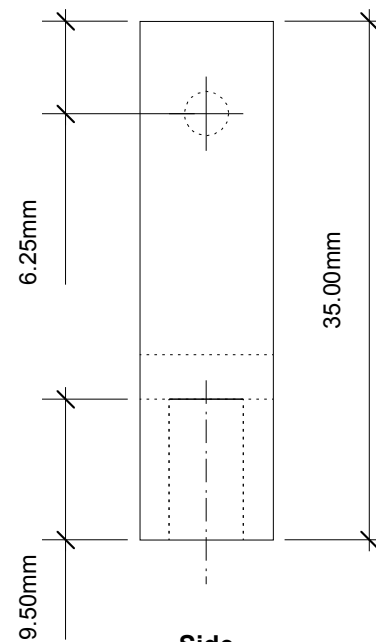
2

A

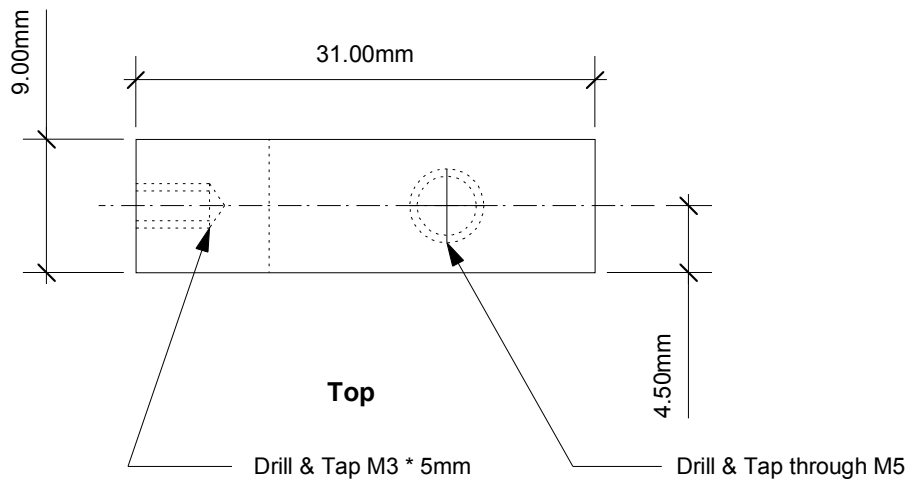
A



Front



Side



Top

B

B

Material - 9mm "Tufnol" sheet (phenolic paper)

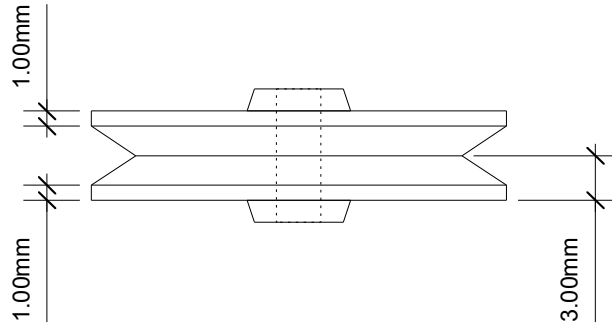
TITLE FoamCutter™	DATE <i>23 Mar 2007</i>
PART NUMBER <i>Vertical Pulley Clamp (2 off)</i>	DRAWN BY <i>N Gillies</i>
CAD FILE NAME foamcutter.mcd	SHEET <i>2 of 8</i>

1

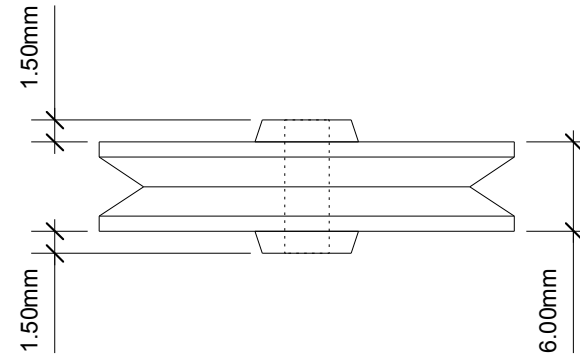
2

1

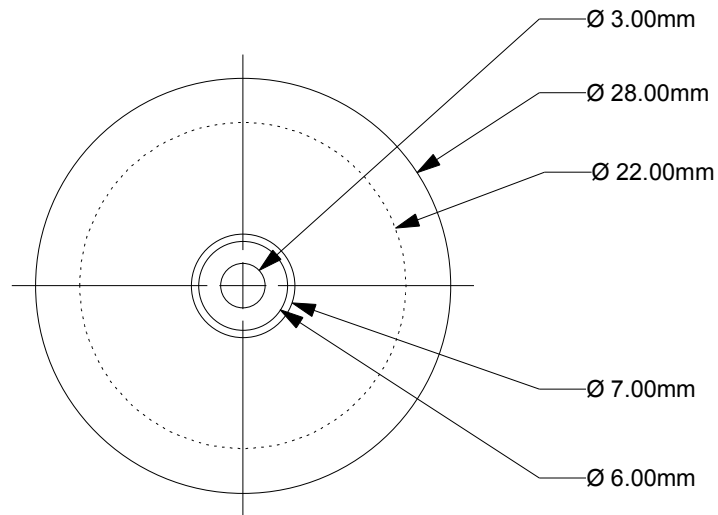
2



Front



Side



Top

Material - aluminium (original from mechanics lab pulley)

TITLE FoamCutter™	DATE 23 Mar 2007
PART NUMBER Pulley Wheel (4 off)	DRAWN BY N Gillies
CAD FILE NAME foamcutter.mcd	SHEET 3 of 8

1

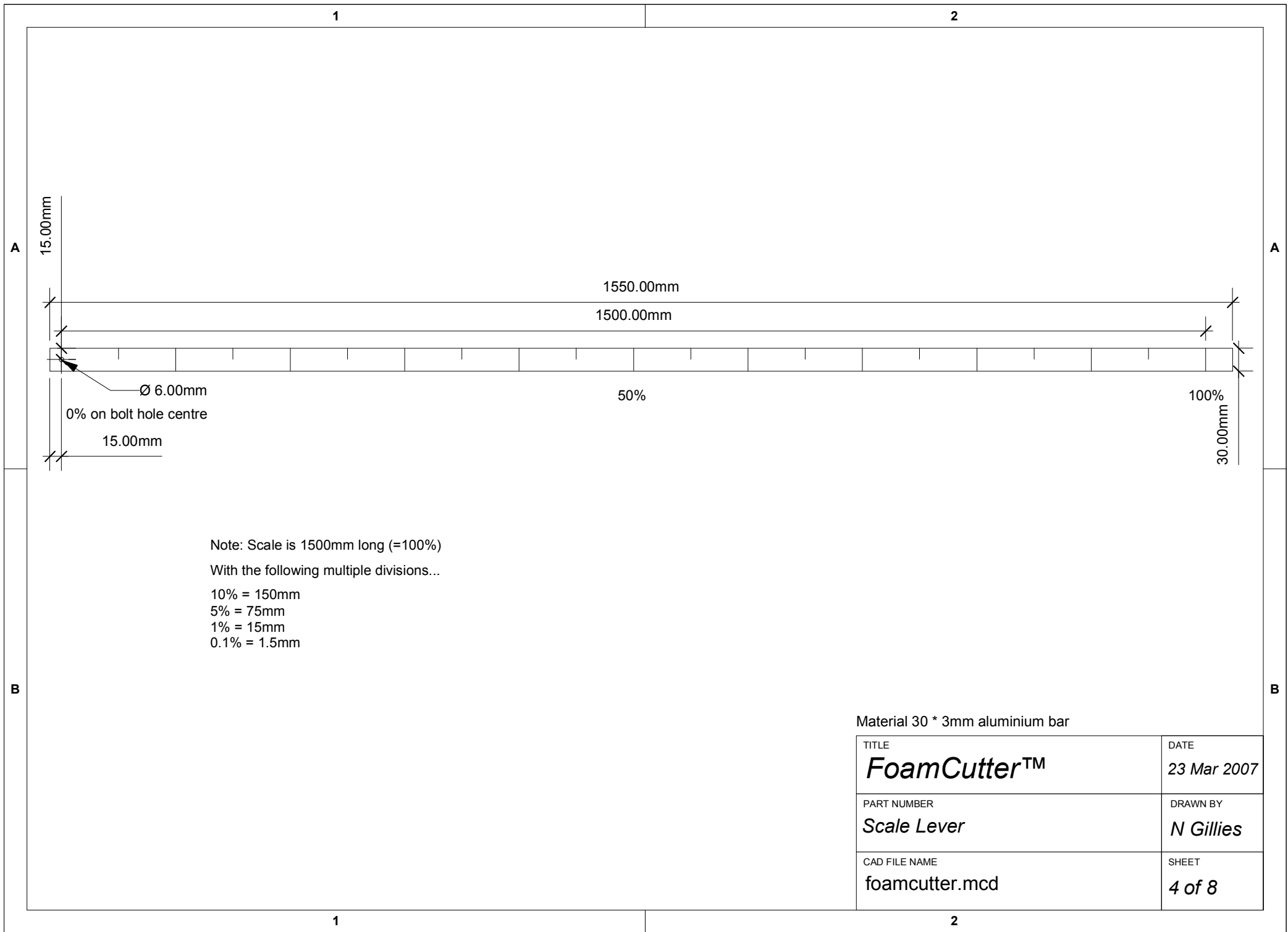
2

A

A

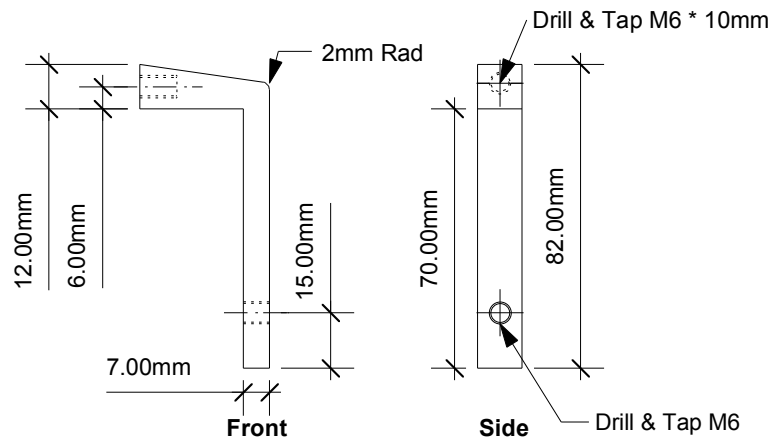
B

B



1

2

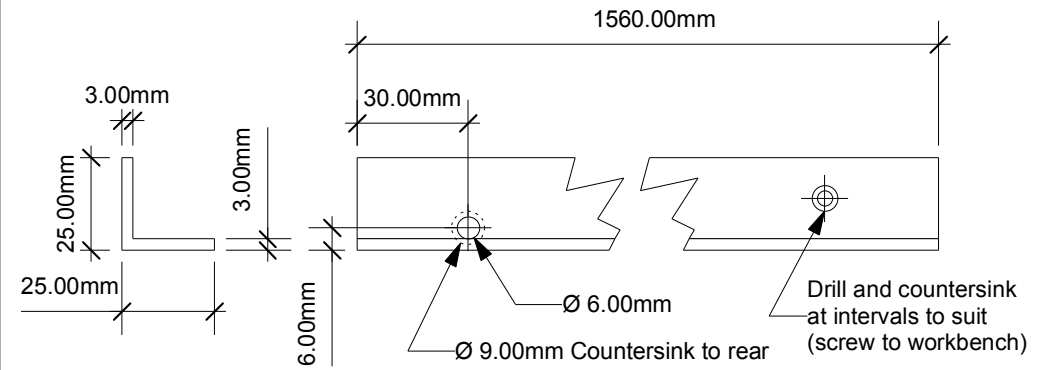


Front

Side

Top

Made from aluminium door handle or similar

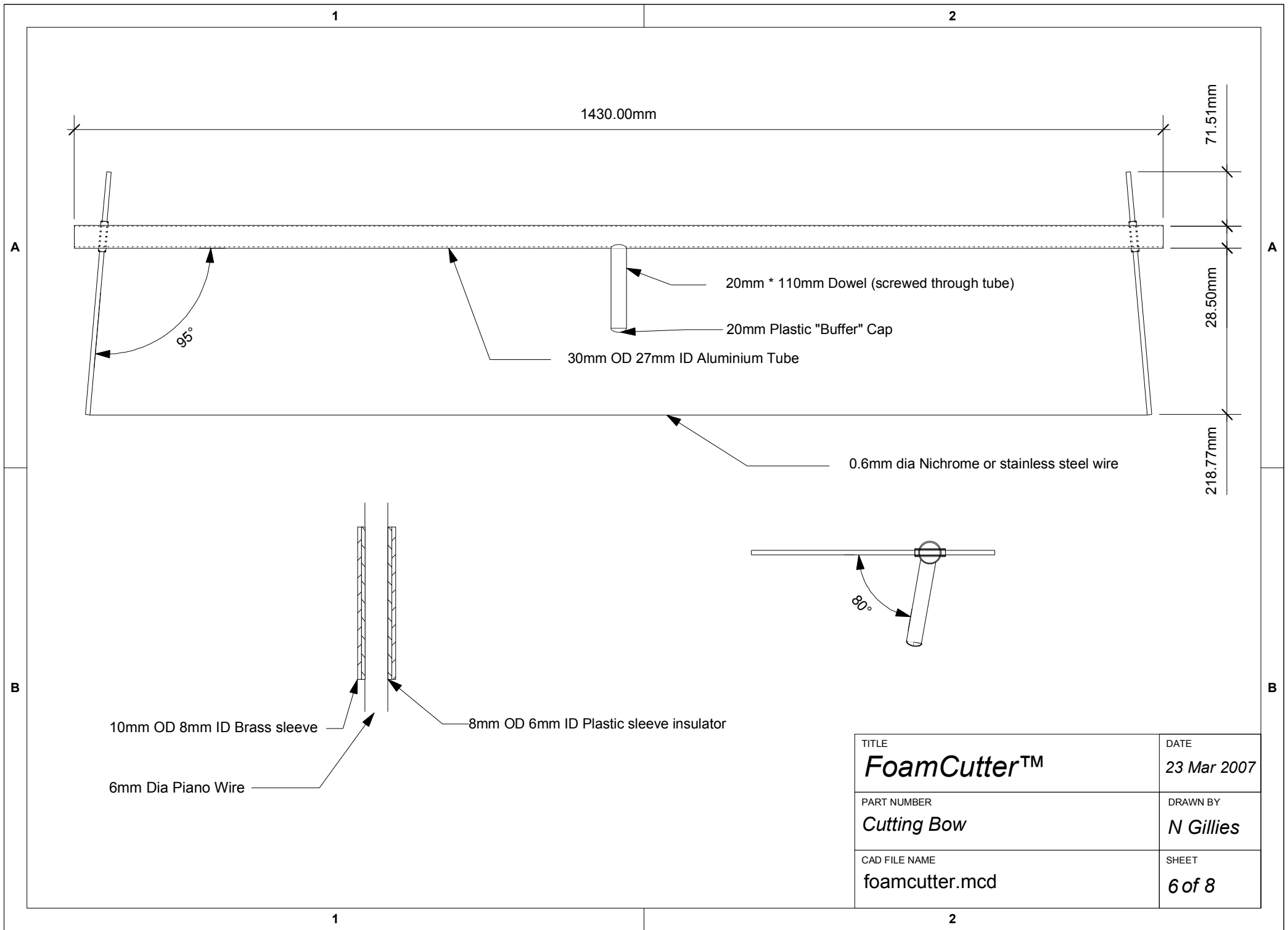


Made from standard 25 * 3mm aluminium angle

TITLE FoamCutter™	DATE 23 Mar 2007
PART NUMBER Bracket + Clamp Support Bar	DRAWN BY N Gillies
CAD FILE NAME foamcutter.mcd	SHEET 5 of 8

1

2



TITLE	DATE
FoamCutter™	23 Mar 2007
PART NUMBER	DRAWN BY
Cutting Bow	N Gillies
CAD FILE NAME	SHEET
foamcutter.mcd	6 of 8

1

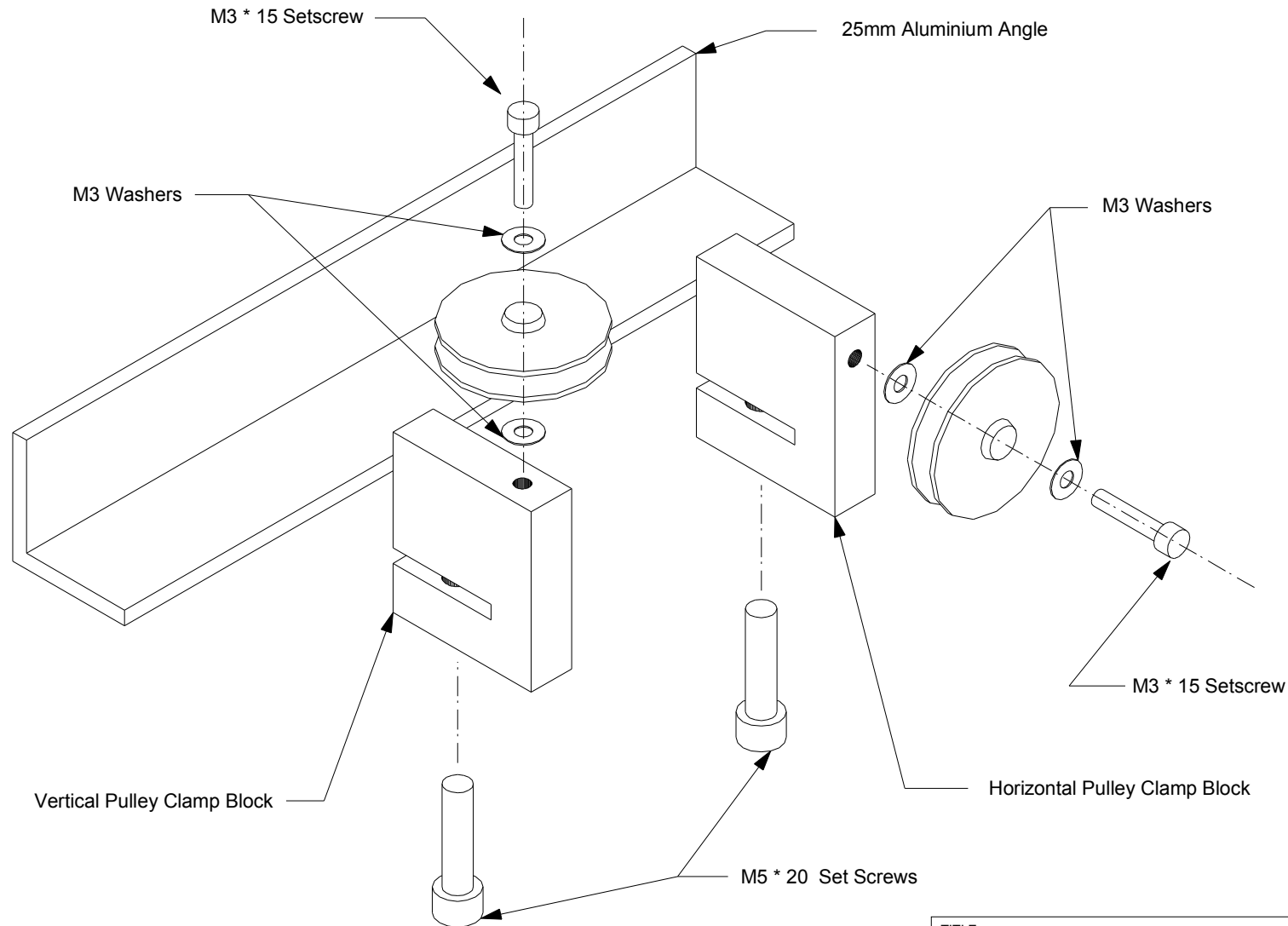
2

A

A

B

B



TITLE FoamCutter™	DATE <i>23 Mar 2007</i>
PART NUMBER General Assy	DRAWN BY <i>N Gillies</i>
CAD FILE NAME foamcutter.mcd	SHEET 7 of 8

1

2

